



Main Street, Witchford, CB6 2HQ

**CHEFFINS**



## Main Street

Witchford,  
CB6 2HQ

- Available: 06/01/2026
- Grade 2 listed house with annexe
- Deposit: £2,884
- EPC: D

Recently renovated, characterful detached Grade 2 listed house with an annexe situated in this popular village location. Accommodation comprises kitchen, utility room, three receptions, five bedrooms, three bathrooms, loft room and a one bedroom annexe. There is a gravel courtyard garden/driveway and patio area. Available: 16/01/2026. Deposit: £2,884. Holding fee: £576. Council tax band: E. EPC: D

6 4 3

**£2,500 PCM**





## LOCATION

Witchford is situated approximately 2 miles West of Ely on the A.142. Witchford has a range of day-to-day amenities and facilities, together with a secondary college. Ely provides a full range of shopping, sporting, and domestic facilities, together with a mainline rail service via Cambridge (15 miles) and London.



## ENTRANCE HALL

with brick and exposed board flooring.

## KITCHEN/BREAKFAST ROOM

with cooker, extractor, dishwasher, washing machine and fridge/freezer.

## RECEPTION

with feature fireplace.

## RECEPTION

with feature fireplace.

## RECEPTION

with understair storage cupboard.

## UTILITY ROOM

with sink and door to the patio area.

## SHOWER ROOM

with shower cubicle, wc and hand basin.

## FIRST FLOOR

## BEDROOM

## EN-SUITE

with shower cubicle, wc, hand basin and access to the loft room.

## BEDROOM

## BEDROOM

with storage cupboard.

## BEDROOM

with storage cupboard.

## BEDROOM

with storage cupboard.

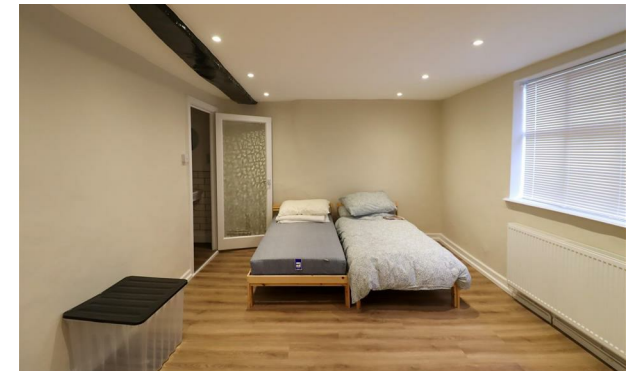
## BATHROOM

with freestanding bath, shower, wc and hand basin.

## SECOND FLOOR

## LOFT ROOM

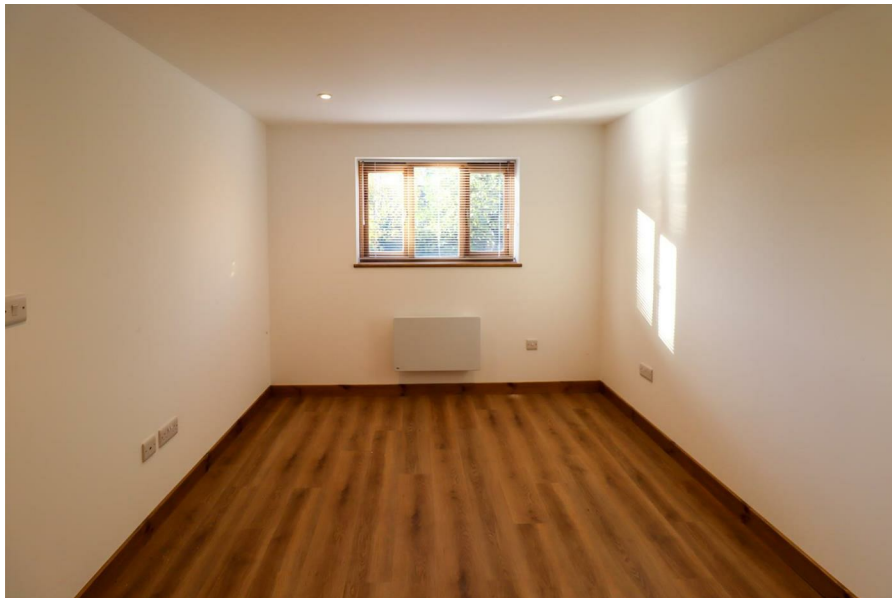
with two doors to access storage space.












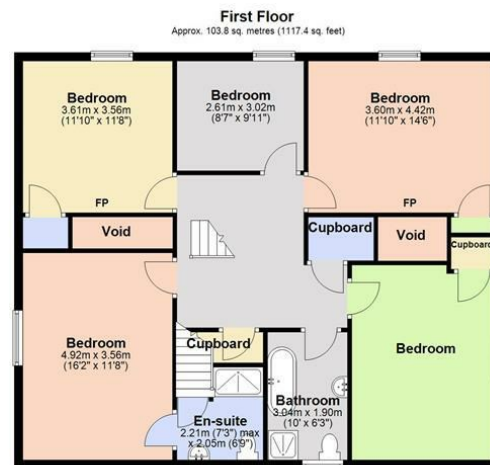








Energy Efficiency Rating		Current	Potential
<p><i>Very energy efficient - lower running costs</i></p> <p>(92 plus) <b>A</b></p> <p>(81-91) <b>B</b></p> <p>(69-80) <b>C</b></p> <p>(55-68) <b>D</b></p> <p>(39-54) <b>E</b></p> <p>(21-38) <b>F</b></p> <p>(1-20) <b>G</b></p> <p><i>Not energy efficient - higher running costs</i></p>		<p>66</p>	<p>82</p>
<p><b>England &amp; Wales</b></p>		<p>EU Directive 2002/91/EC</p> 	



Total area: approx. 247.3 sq. metres (2661.5 sq. feet)

